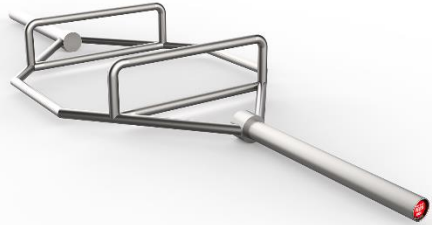


CROMED HEX BAR



DIMENSIONS **Total:** 2180 x 730 x 190 mm
Interior: 570 x 670 mm

WEIGHT 35 kg

FEATURES
Composition: Round tube in iron. Chrome finish.
Color: Chrome.
Grip: 29 mm in diameter.
Disc sleeve: 530 mm long and 49.8mm in diameter.
Knurl: Diamond relief in the center of the two grips on each side.
Maximum Capacity: 550 kg.

FUNCTION Hexagonal bars are used for strength exercises. Most often used in strongman training methodology in preferred movements such as deadlift, or farmer carry.

MAINTENANCE Cleaning of magnesium and dirt should be carried out weekly, according to its use, focusing especially on the application of a lubricating and anti-rust liquid.

For end consumers: 2 years.

For business consumers: 1 year.

WARRANTY Warranty exclusion: Cannot fall without weights. You must not fall with weights on rubber flooring, or other flooring or product for cushioning falls, less than 15mm. It should not be used outdoors. It should not be arranged with weights. When proper cleaning and maintenance is not done according to the maintenance point.

